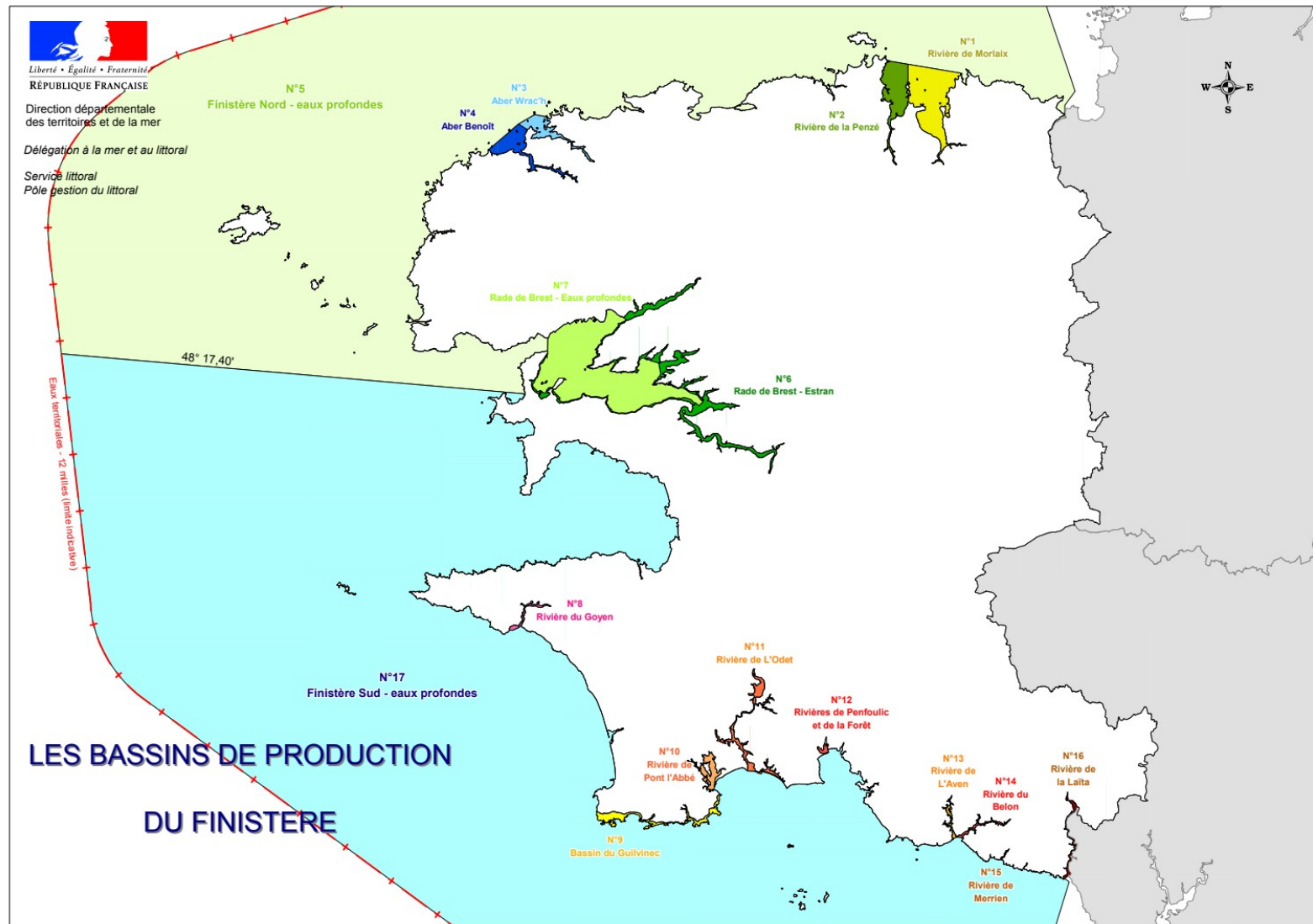


Authorization process onshore and offshore



Productions areas



Shellfish in Finistere

- 1447 concessions representing approximately 1607 hectares
- 260 dealerships
- 128 seawater intakes
- 6700 t of oysters and 3300 t of mussels shipped
- Cultivated species: oyster, flat oyster, mussel, abalone, clam, seaweed, ..
- Hatchery of scallops, abalone
- Seaweed: 28 concessions for 197.6 ha.



Legal framework

3 main parts :

- Occupation <=== subject of today
- Health regulation (for marketing)
- Animals health regulation

Legal framework

- Rural Code and Sea Fisheries (from decree of 1983) introduce condition :
- - professionnall capacity
- - distribution of capital
- Process to attribute« concession » (farmer, species, technics, duration, etc ;;;)

Legal framework : Planification

- Regional plan for development of aquaculture

In a context of increased use on the French coast, the spatial planning of marine aquaculture has gradually emerged as a challenge to ensure its sustainability and development consistent with other uses. Faced with this issue, Article L 923-1-1 of the Rural Code and Sea Fisheries, introduced by the law of modernization of agriculture and fishing of July 27, 2010, provided for the development of regional plans Marine Aquaculture Development Program (SRDAM). Their purpose is to **identify**, in each region of the metropolitan littoral, **the existing sites and the sites favorable to the development of marine aquaculture** (shellfish farming, marine fish farming and other marine cultures).

Legal framewok : « schema des structures »

- This prefectural decree outlining the structure of marine culture holdings defines the priorities according to which the objectives of the management policy for marine farming structures set out below are implemented in Finistère:
- 1. Promote the establishment of young farmers
- 2. Ensure the maintenance of economically viable enterprises by avoiding their dismemberment and by promoting their recovery
- 3. Allow the creation or the resumption of operation with a functional unit
- 4.Enable the expansion of holdings that do not reach the minimum reference dimension.
- 5. Promote the redevelopment of marine farming areas and the establishment of young farmers, particularly by setting aside areas granted to regional shellfish farming committees.
- The scheme has been subject to an environmental assessment and a joint impact assessment. Measures to avoid, reduce or offset the impacts of marine crops have been deduced.

- For project in area N200 that demonstrate their conformity with the « SdS »=> no need impact assessment detailed, just conformity certificate
- Project that cannot demonstrate conformity, impact assessment should be done to evaluate environment impact of the project (for example new species, new technics, building, slipway ...)

Environment take into account

- article R414-19 of environment code
- the order of 24 June 2011 establishing the local list of projects subject to impact assessment
- => impact assessment compulsory for marine cultures authorization in N2000 area

Request
professionnal capacity chek
measured
capital chek for society

Creation
Renew
Modification (space, species, technical)

Simplified investigation :
city and near city
Professional organization

Internal advice :
Water policy
Environment
Public occupation

Assent : maritime authority
(civil and military)
Advice : tax service
Health human service
Environment protection service
Beacon and lighthouse

45 days

1 month, 1 month more if necessary

If Natura 2000=> landscape and nature comitte
If needed=> beacon comitte

Commission of marines cultures
members are : professionals of shellfish, elect, environment
Association, administrations)

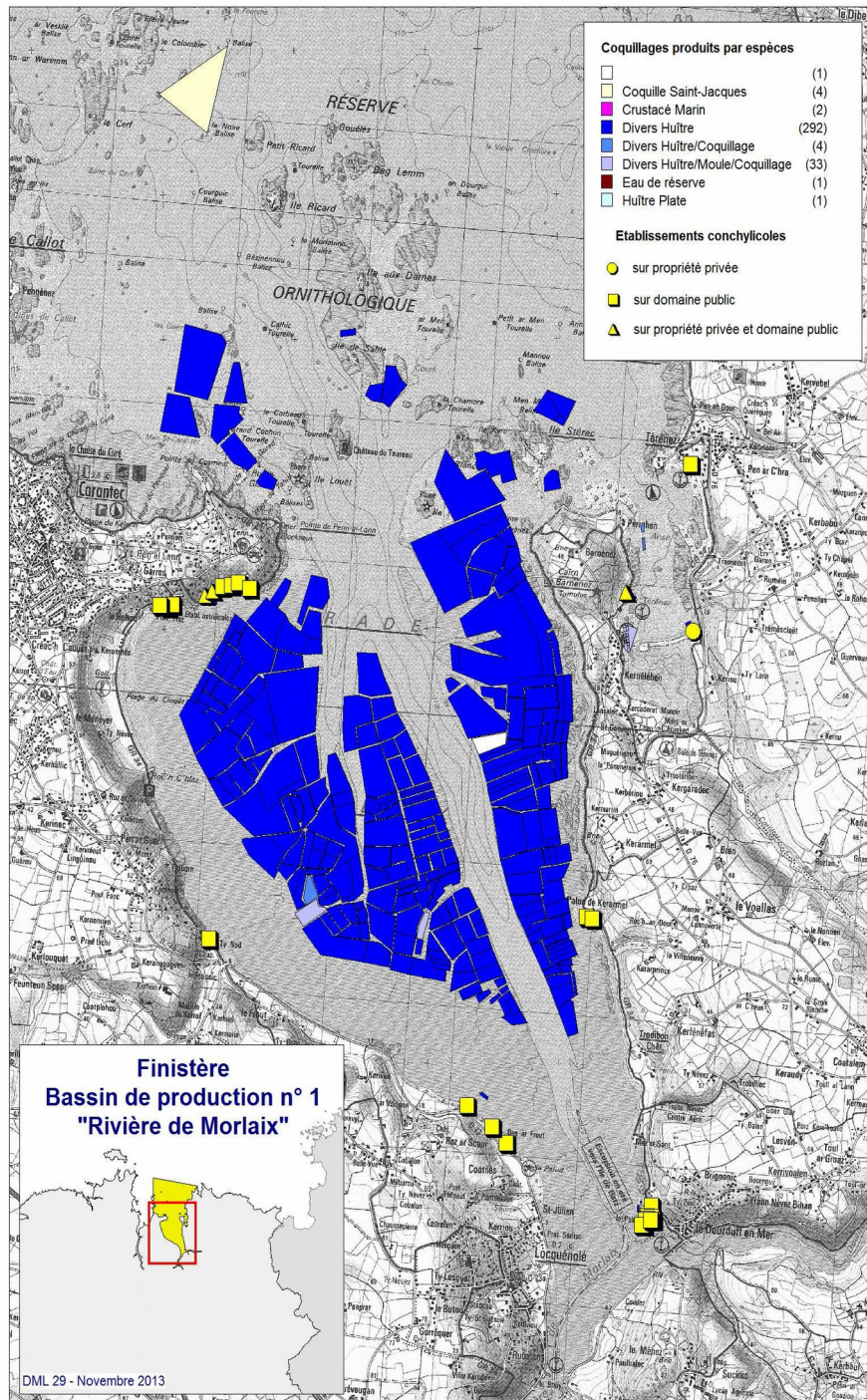
Decision by decree (authrorization or refusal)

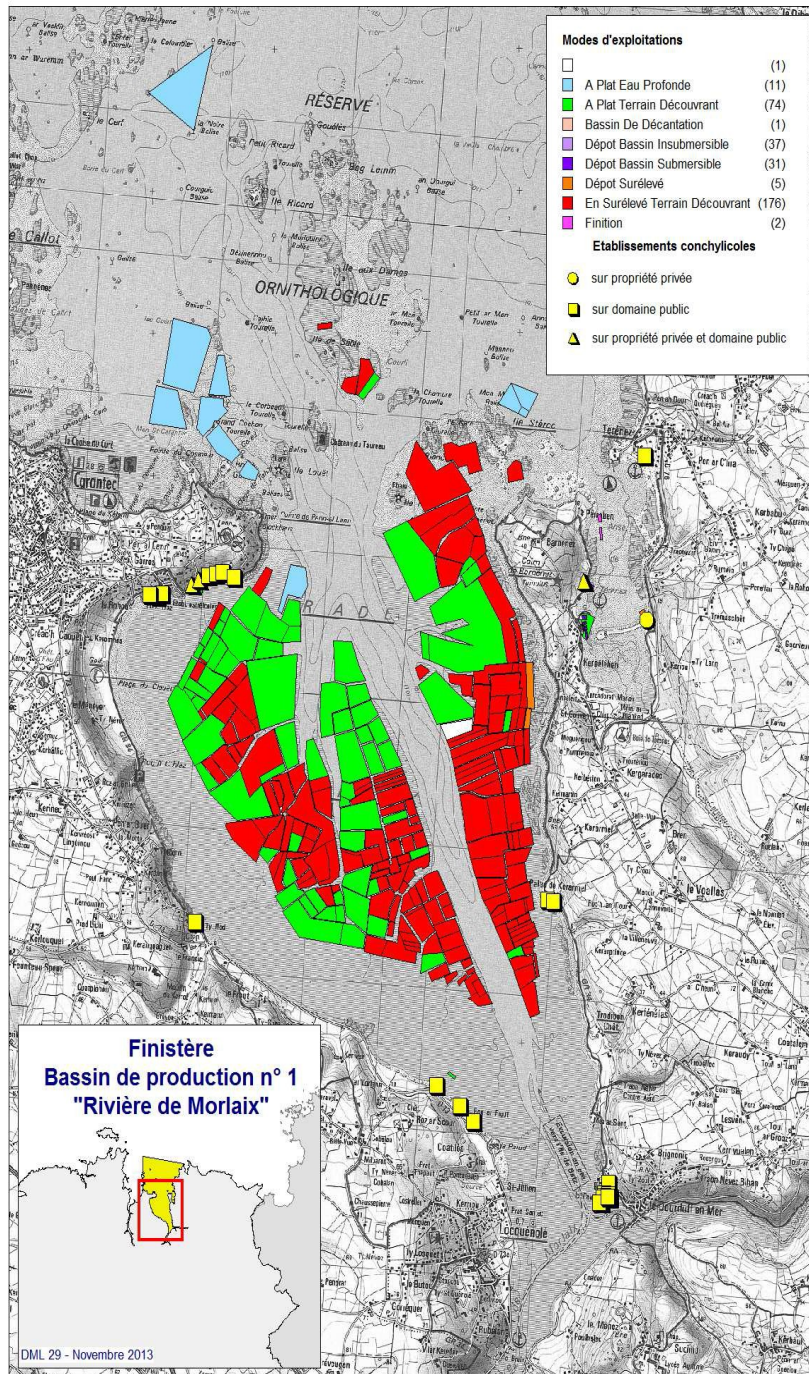


- Example of « schema des structures »
- Morlaix bay , 1st area of oyster production in Finistère

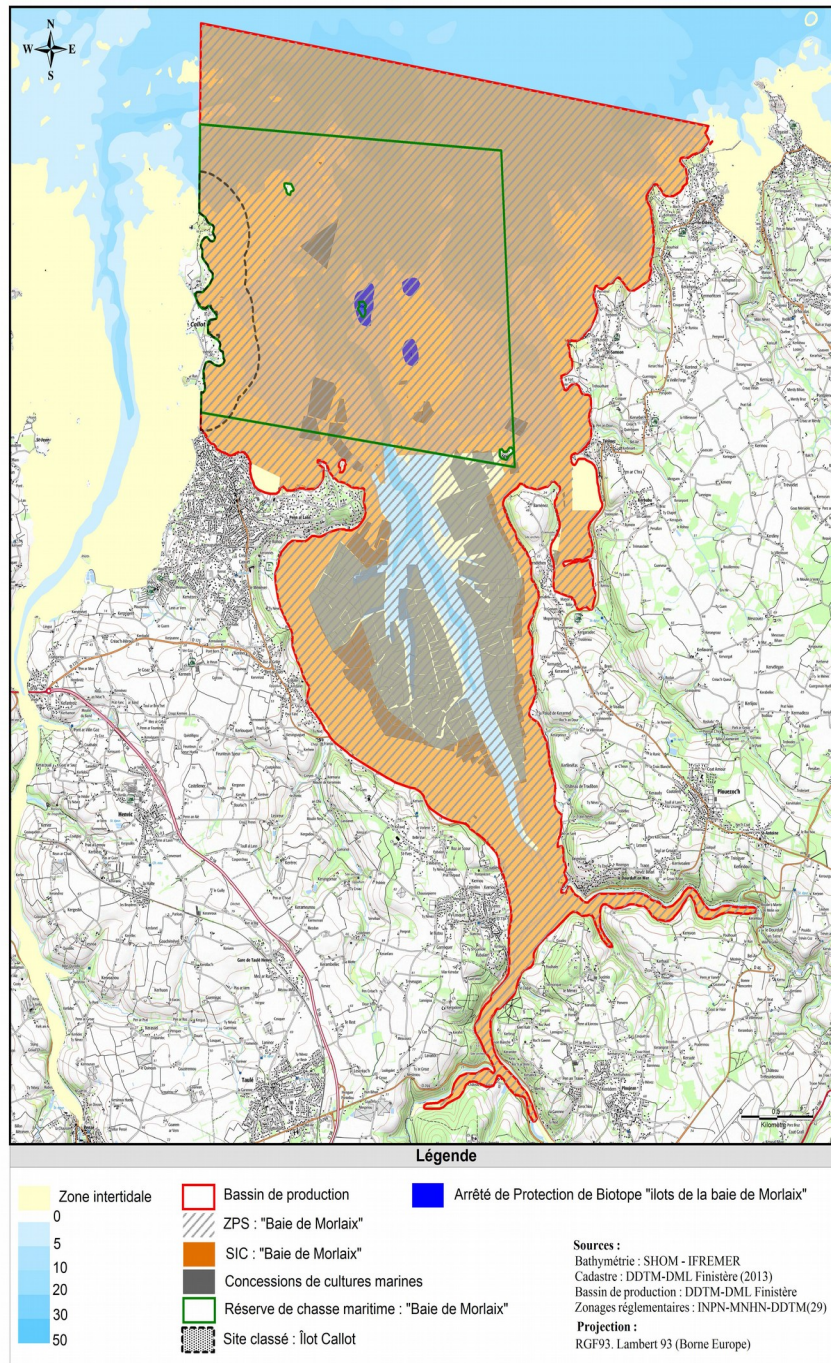
Extract of « schema des structures » - Morlaix bay

species

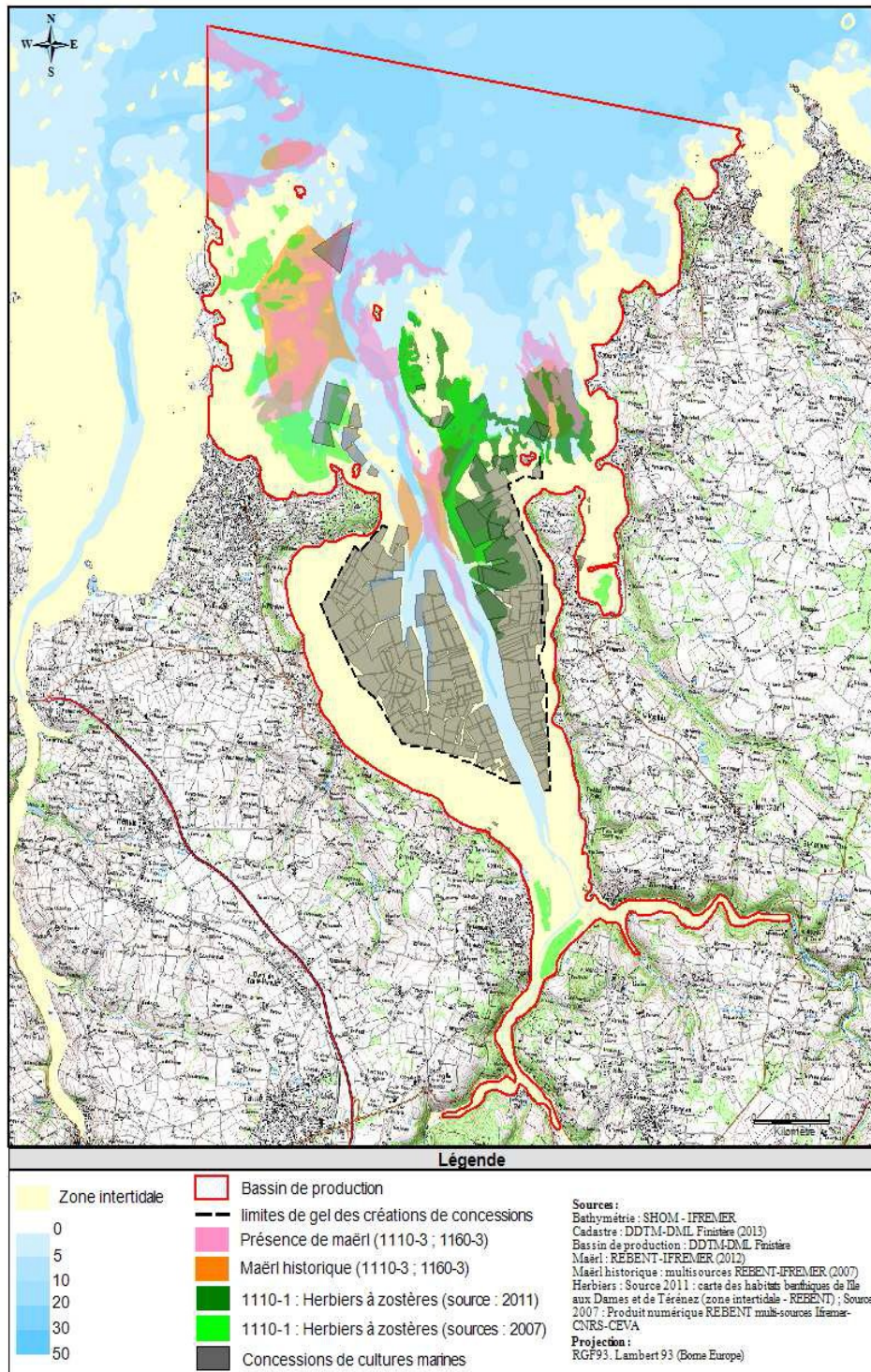




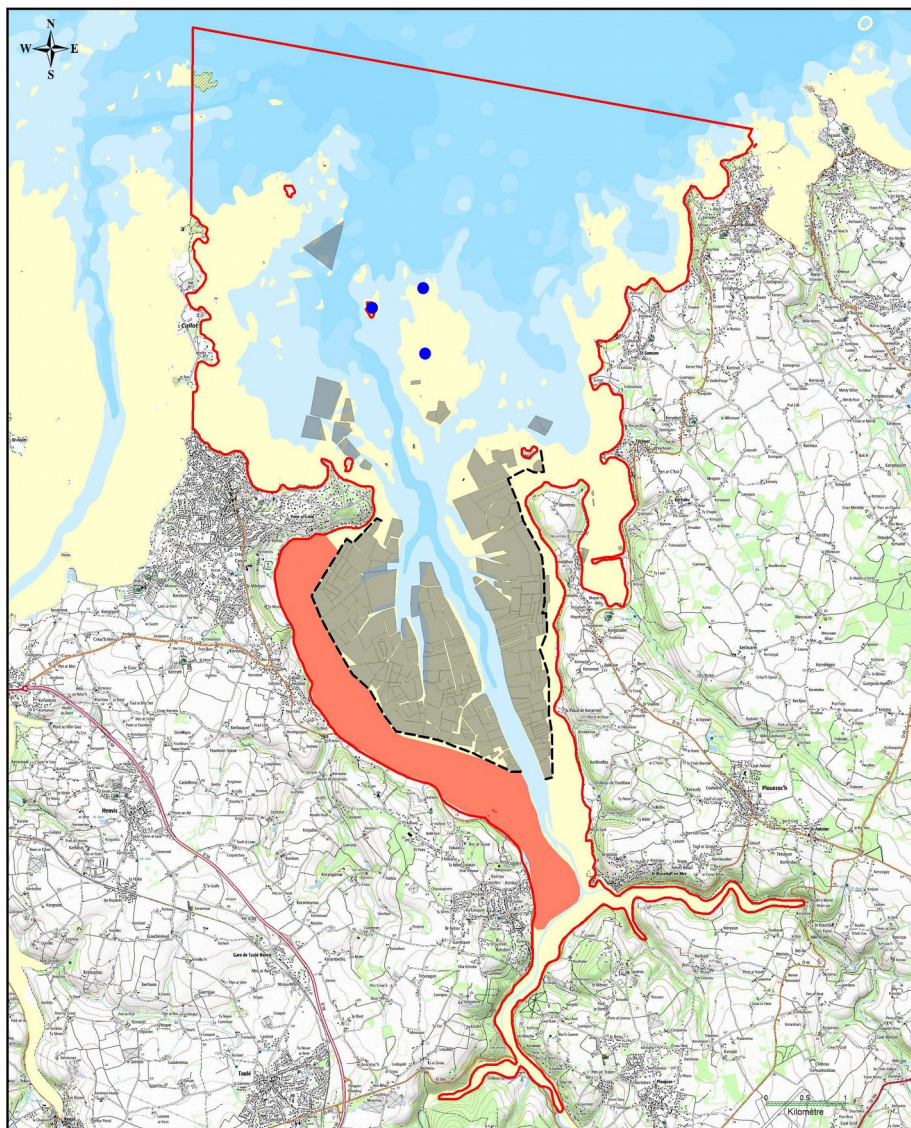
- Tecnicas (flat, deep water, raised table, etc..)



Environment protection (hunter reserve, Natura, protected site, ...)



Marine ground important for environment
(zostere for example)



Légende

Zone intertidale	Bassin de production
0	Limites de gel des créations de concessions
5	Sites de nidification
10	Zone fonctionnelle pour l'alimentation des oiseaux
20	Plateau des Bizeyers : reposoir phoques gris
30	Concessions de cultures marines
50	

Sources :
 Bathymétrie : SHOM - IFREMER
 Cadastre : DDTM-DML Finistère (2013)
 Bassin de production : DDTM-DML Finistère
 Zones fonctionnelles : SEPNE-Bretagne Vivante (2009)

Projection :
 RGF93. Lambert 93 (Borne Europe)

- Area for bird



Légende

Zone intertidale

0
5
10
20
30
50

Bassin de production



Concessions de cultures marines



Herbiers : Limiter le développement des nouvelles activités en fonction de l'évaluation environnementale de chaque projet



Zones fonctionnelles avifaune : limiter le développement des nouvelles activités à l'élevage au sol

Sources :

Fond de carte : Lito 3D 2012 - DDTM-DML Finistère
 Cadastre : DDTM-DML Finistère (2013)
 Basse de production : DDTM-DML Finistère
 Zones fonctionnelles : Buisson, B (2013)
 Herbiers à zostères : multiples sources REBENT-IFREMER

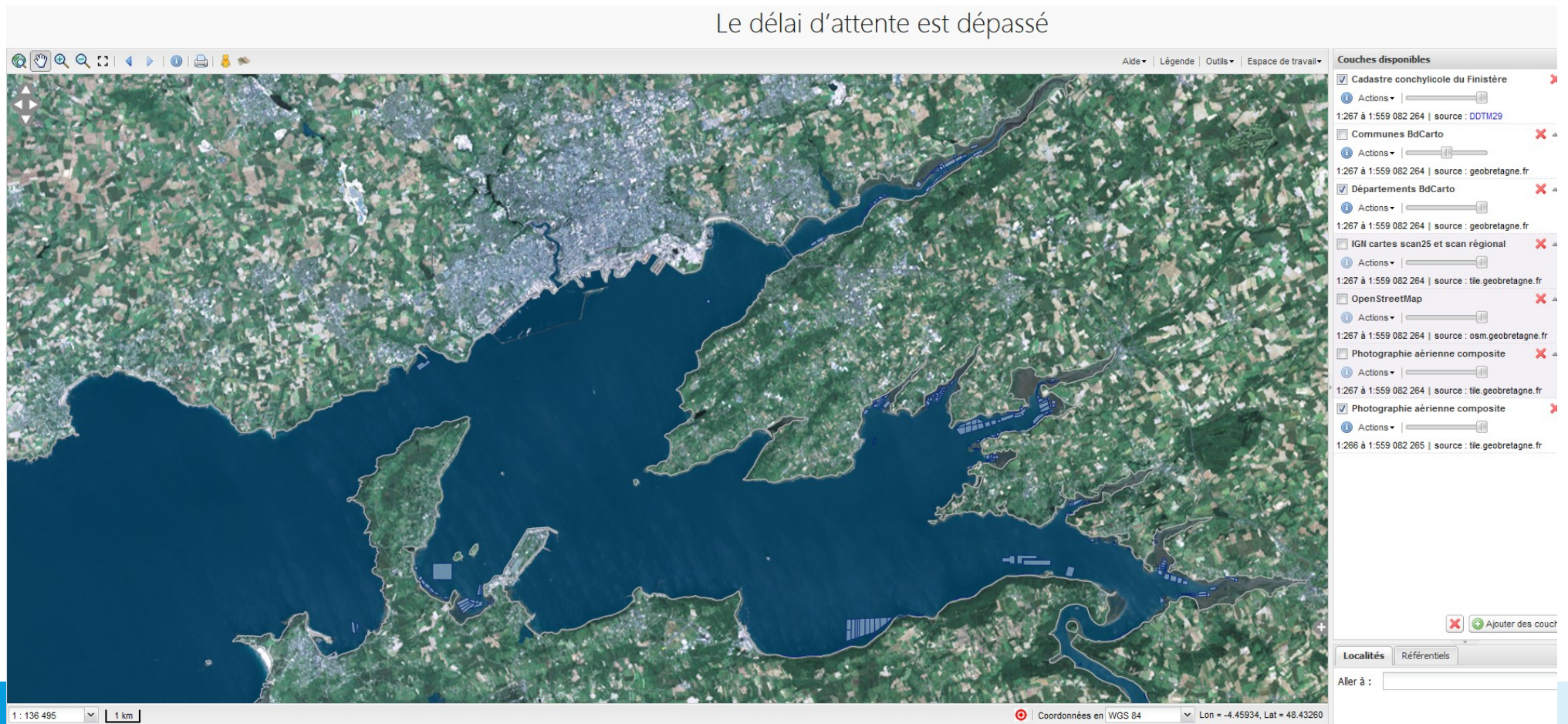
Projection :

RGF93 - Lambert 93 (Région Europe)

Management measure for marine culture

Data diffusion

- <https://geobretagne.fr/mapfishapp/map/fd52fb4527e1740914b0ef64fbaef9bb>



Data Diffusion

- Administrations or public services which have non-confidential information of interest to the public and in particular to businesses should be able to consider its dissemination.
- But data should be anonymous
- Commercial secret should be protected
- => metadatas shows : area and technical use

Project access mer

- No SRDAM in Brittany
- Professionals need tool to find an area for installation
- Compilation of area in Finistere with all characteristics : existing and possible site taking account all spacial regulation, water quality, technical possibility for sea water